

MANTRA SOFTECH INDIA PVT LTD

# Android Mantra RDService

---

## User Manual

**Mr. Jigar Shekh**

**7/10/2017**

## 1 INTRODUCTION

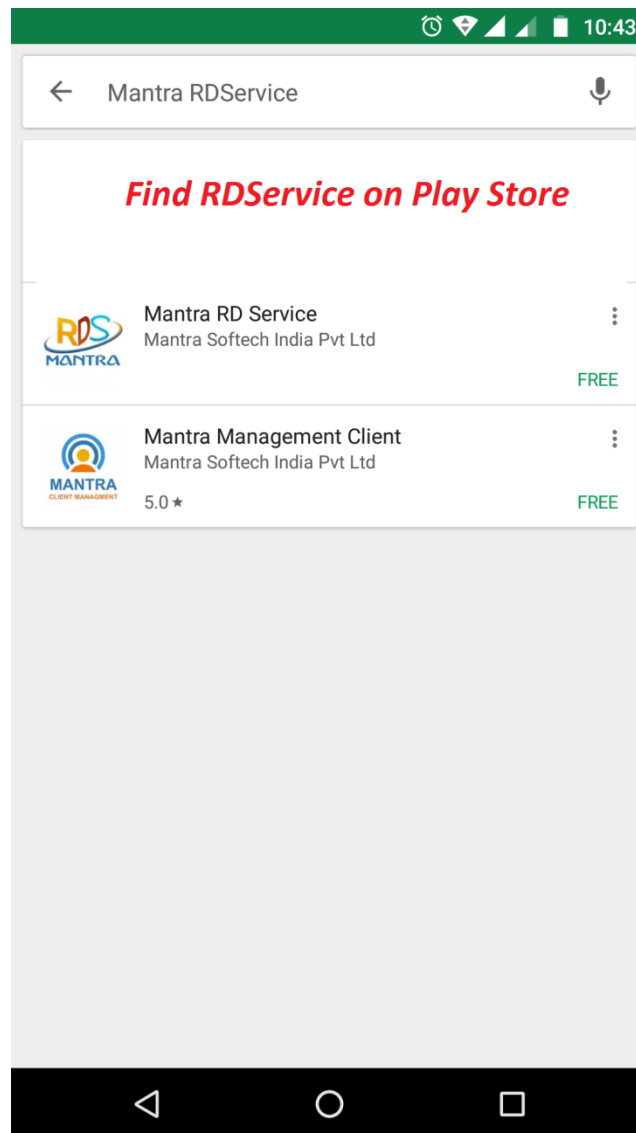
The User Manual contains all essential information for the user to make full use of the rdservice. This manual includes step-by-step procedures for working with Rdservice.

## 2 INSTALL RDSERVICE & MANAGEMENT CLIENT

Rdservice & Management client can be download from Google play store.

RDSERVICE: <https://play.google.com/store/apps/details?id=com.mantra.rdservice>

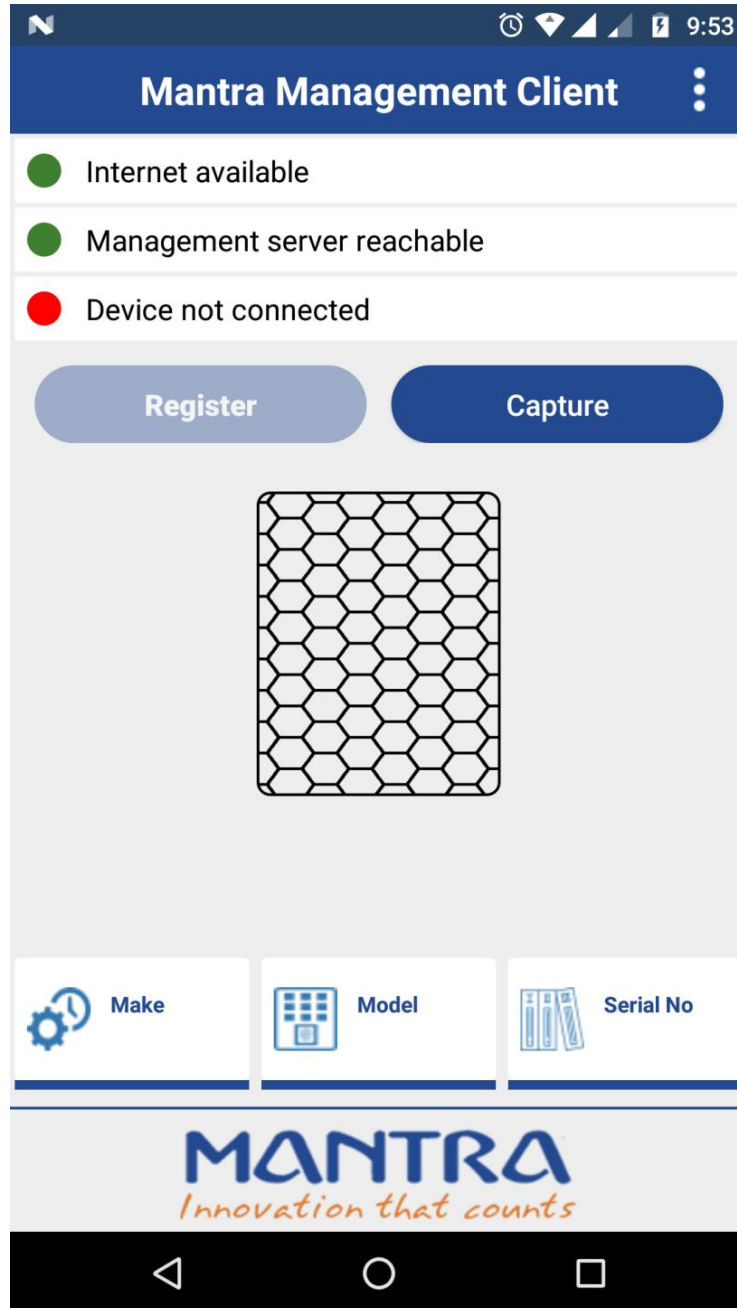
Management Client: <https://play.google.com/store/apps/details?id=com.mantra.clientmanagement>



### 3 OPEN MANAGEMENT CLIENT

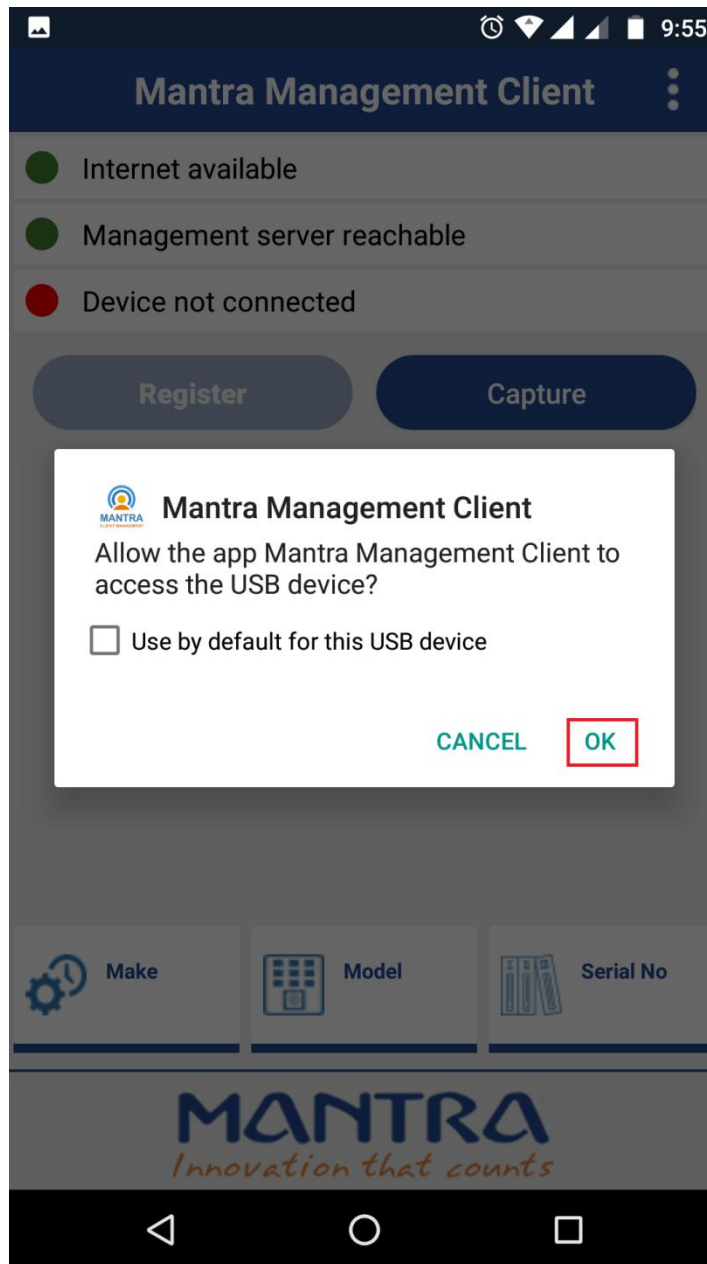
Open management client. Check internet connectivity status, management server status and device connected status.

If you want to working with rdservice then internet should be required.



#### 4 DEVICE CONNECTION

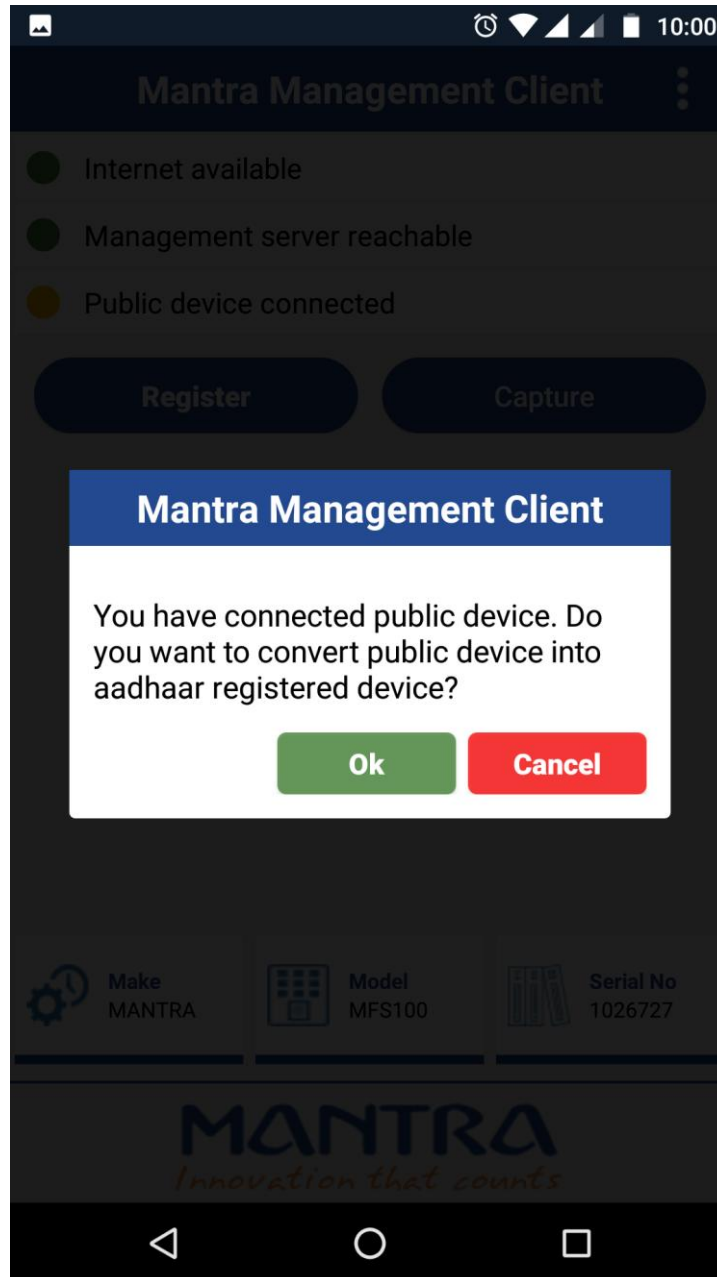
Now connect device then permission dialog open and give the permission.



## 5 DEVICE STATUS

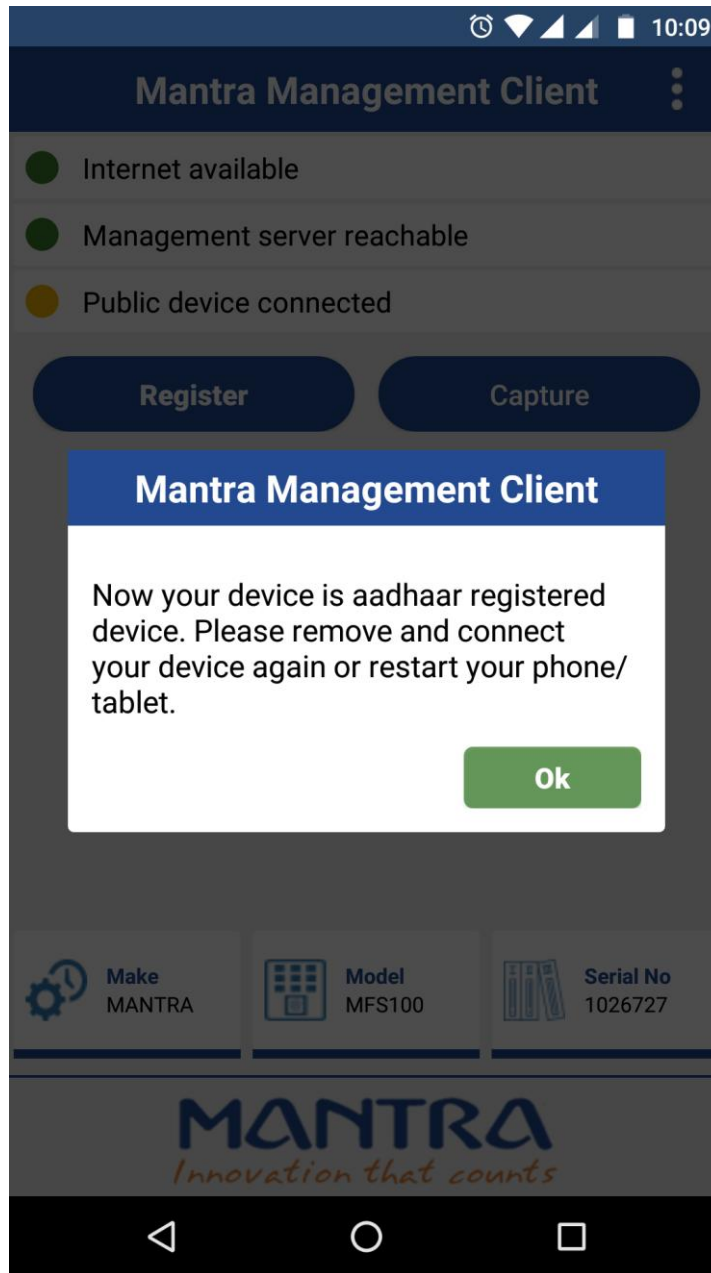
Check device status. If device status is yellow (Public device connected) then enable Register button. Click on Register button then confirm dialog open. If you want to convert your device to register device then click OK.

Internet should be required at this time.



## 6 PUBLIC TO REGISTER DEVICE

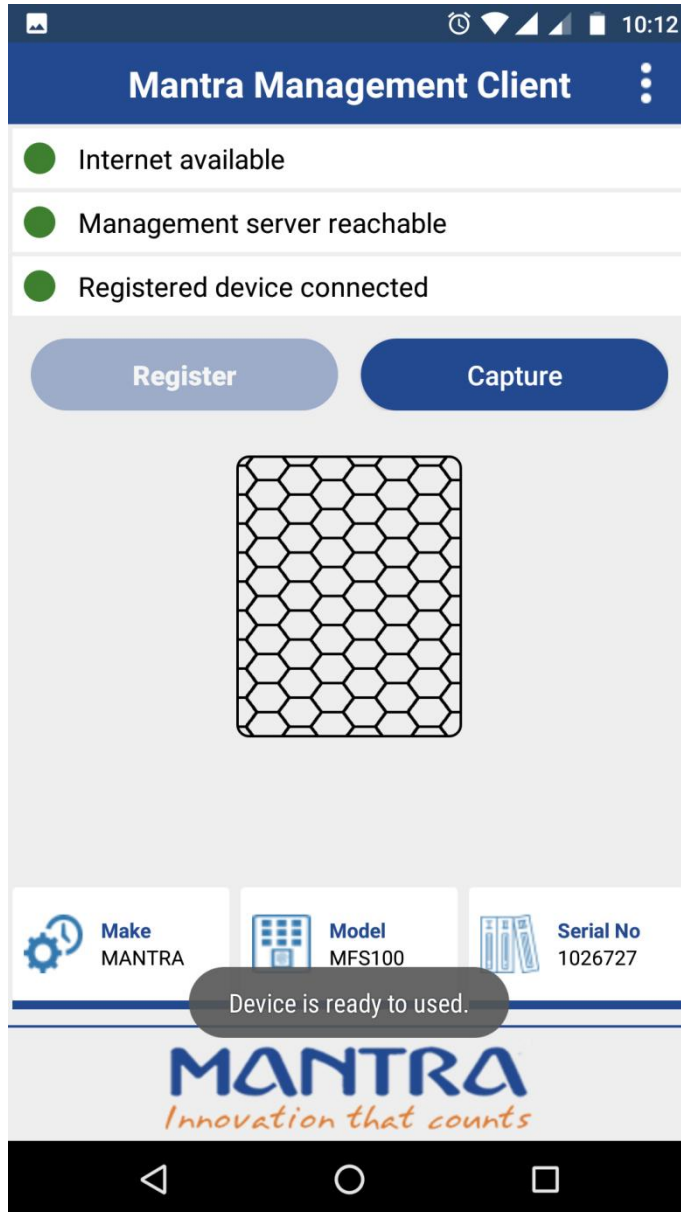
Successfully register on success dialog is open then after device disconnect & connect again or restart phone/tablet.



## 7 REGISTER DEVICE

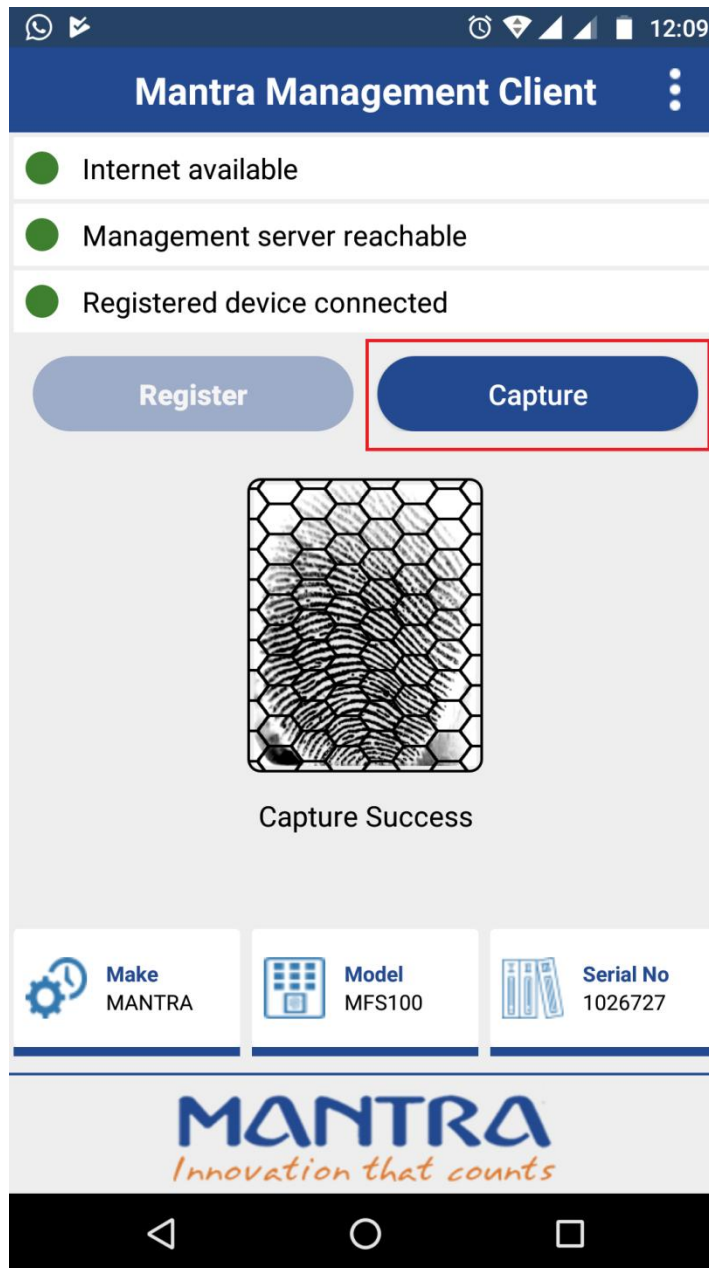
Now connect again device and wait for validate device on management server. If device is validate on server then you have received message "Device is ready to used".

Now, your device registered device.



## 8 CAPTURE TEST

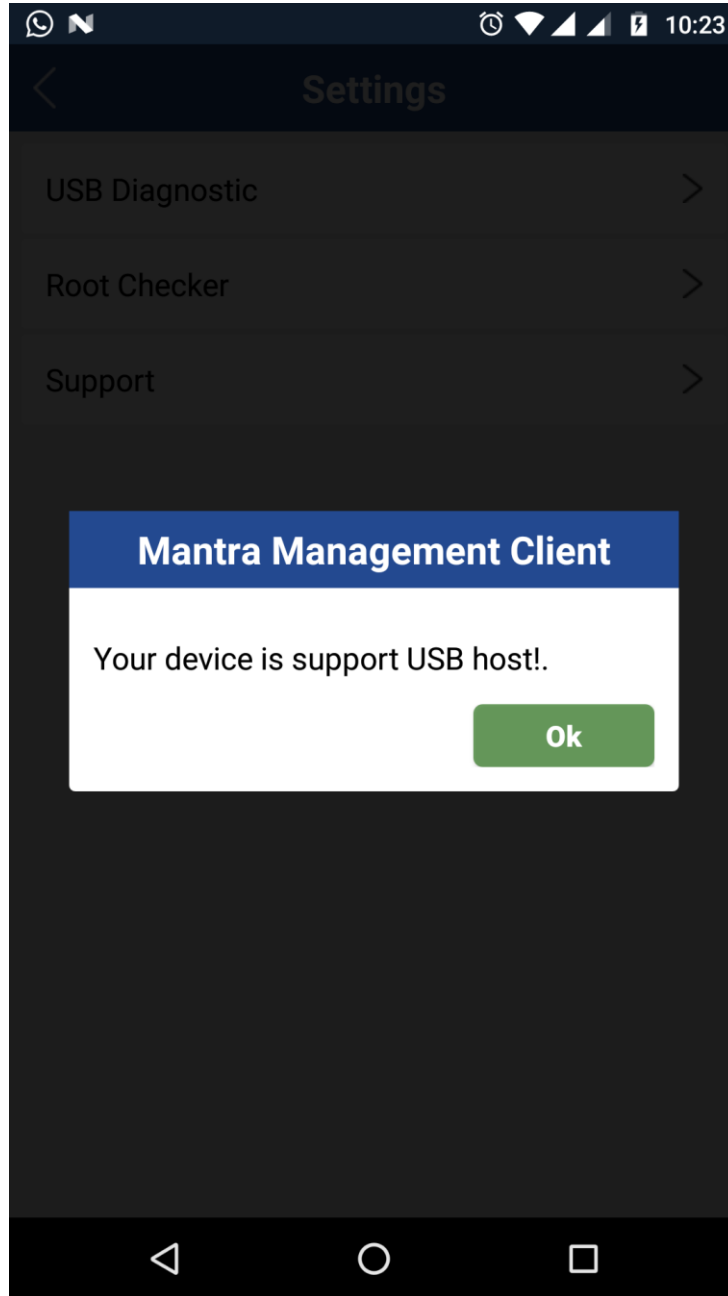
Click on capture for test.





## 9 USB DIAGNOSTIC

Check your android device is USB host support or not.



## 10 ROOT CHECKER

Check your android device is rooted or not.

